



HIKA PARK REDEVELOPMENT

Village of Cleveland, WI



Conceptual Master Plan 1:200

Program Statement

The redevelopment of Hika Park, located in Cleveland, WI, must advance with care and concern for the site's cultural and environmental features. By creating spaces for people to enjoy, one can attract a larger number of visitors to view the soon to be restored Centerville Creek, and thereby increase the awareness of said cultural and environmental concerns. Because of this, the concept for Hika Park is 'Elevation and Recreation'.

This concept focuses on the implementation of use-increasing elements such as plazas, athletic courts, shelters, picnic areas, and viewing platforms while siting and constructing them in a topographically interesting way. These elements would be located on the lakeshore, and would attract users to the park so as to draw them into the Centerville Creek restoration area.

The elements would not only allow individuals to more thoroughly enjoy the site, but, with proper signage and educational opportunities, would also allow park users to increase their cultural and environmental awareness. These educational opportunities would exist throughout the park and would include pamphlets, guided tours, and a visitor center dedicated to spreading public awareness regarding dune ecosystems and Lake Michigan conservation. By increasing this awareness Hika Park can establish an ever-increasing importance in the Wisconsin State Park system.



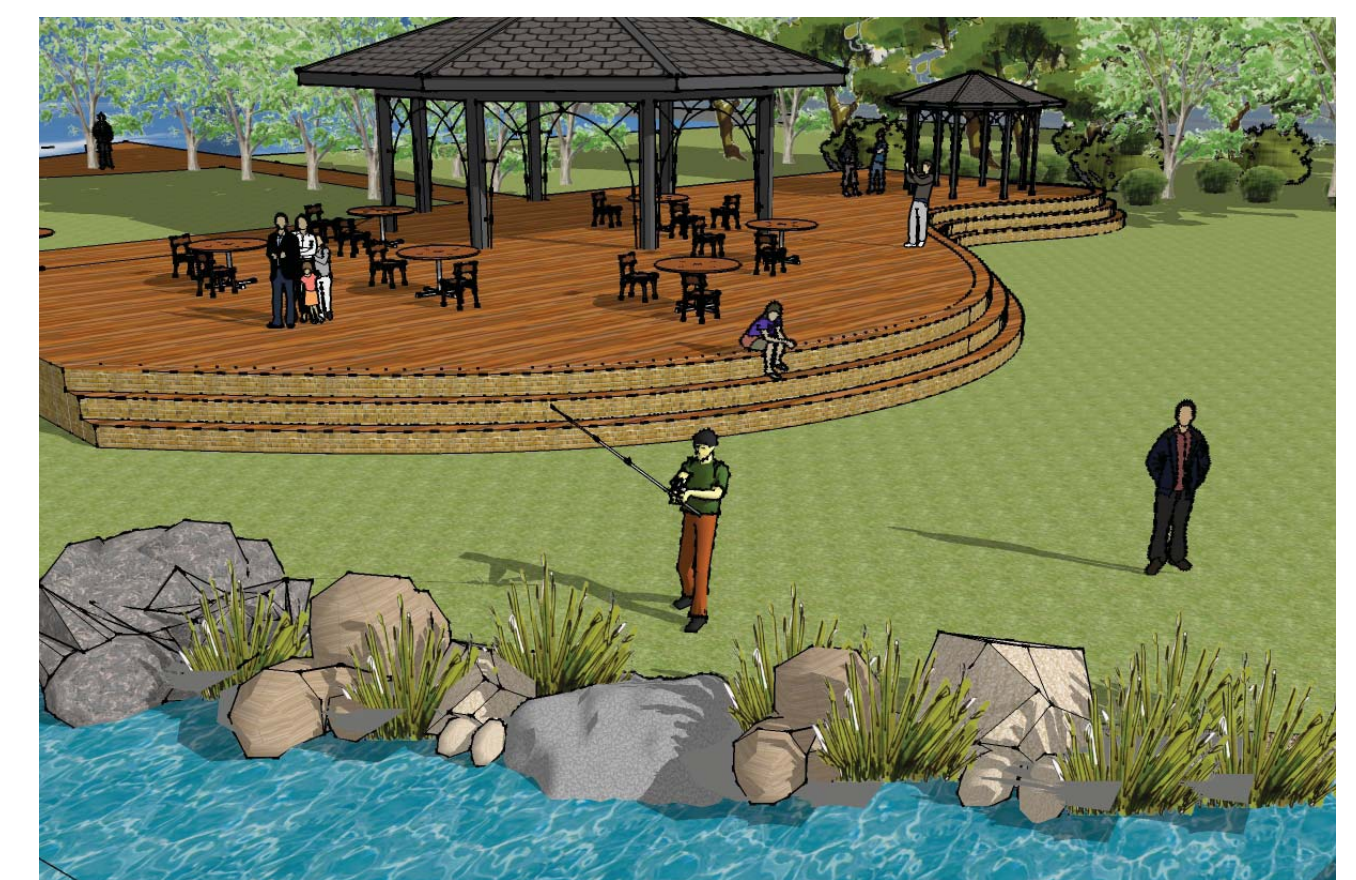
Volleyball and Gathering Spaces

The introduction of athletic facilities as well as gathering and viewing spaces allows for more site specific uses and helps to attract users with different abilities and interests.



Beach Shelter and Dune Walkway

Beach shelters allow users to claim territory on the beach and increase sense of security and sense of place. The shelters are located just outside the dune ecosystem and would serve as educational viewing platforms.



Lake Michigan Viewing Shelters

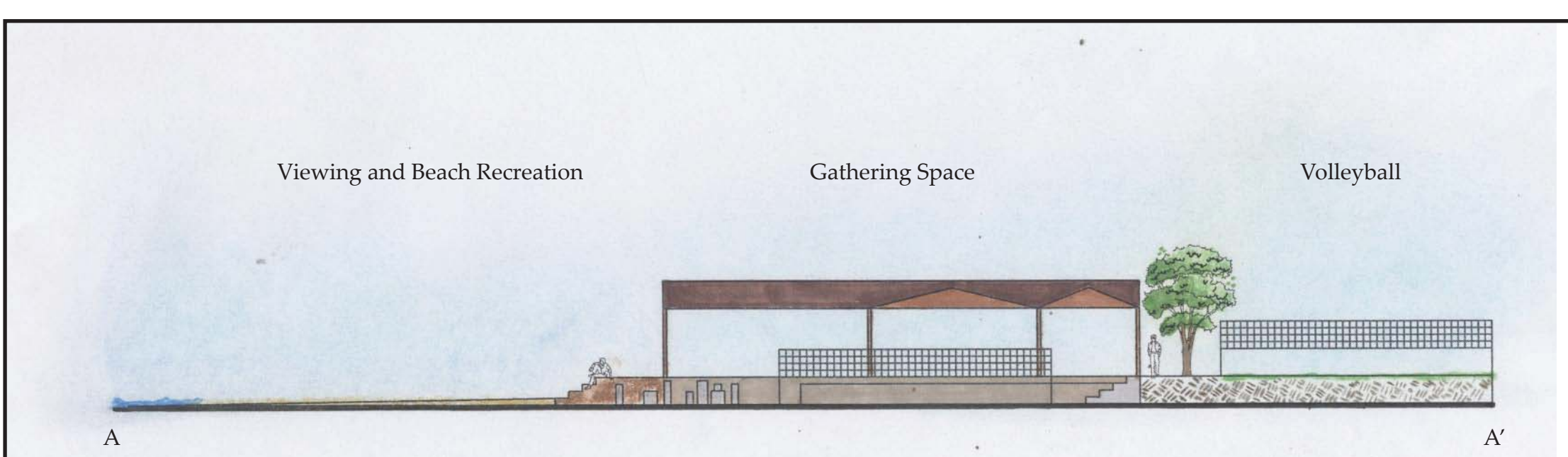
Viewing shelters allow users to view Lake Michigan while remaining out of the open space use areas which would support more active beach-related activities.



Lakeshore Master Plan 1:100

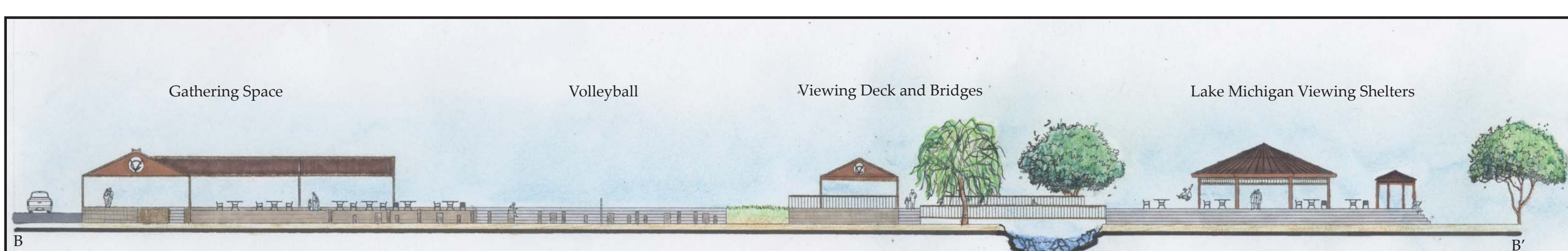
Project Goals

- Increase public awareness regarding the dune ecosystem and Lake Michigan conservation through educational signage and a visitors center.
- Establish a distinct sense of place and increase active and passive viewing opportunities through the introduction of plazas and other built gathering spaces
- Create more opportunities for passive and active recreation by introducing distinct athletic facilities and open space areas.
- Reestablish a user-friendly beach environment so as to provide incentive for dune circulation and awareness.



Lakeshore Section 'A' 1:20

This section shows the change in elevation as one proceeds from the western volleyball court towards Lake Michigan. The sidewalk and steps which separate the two courts allows park users to view both volleyball courts while travelling through the site. The cylindrical 'beach bollards' help to define the space, provide surfaces for play and seating, and helps keep the volleyball in play.



Lakeshore Section 'B' 1:30

This section shows the site as it would appear from Lake Michigan and portrays the elevation change and associated gathering spaces found on the lakefront. The gathering spaces transition from one to another and provide users with distinct places to view the lake and socialize.

BLAKE ANDERSON

MAY 4, 2010

LA 451 - OPEN SPACE PLANNING AND DESIGN